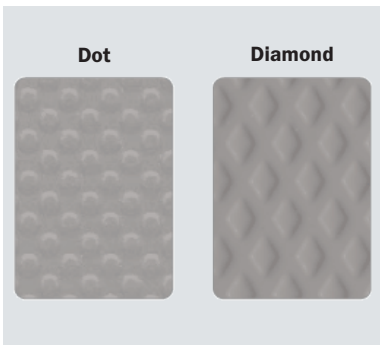
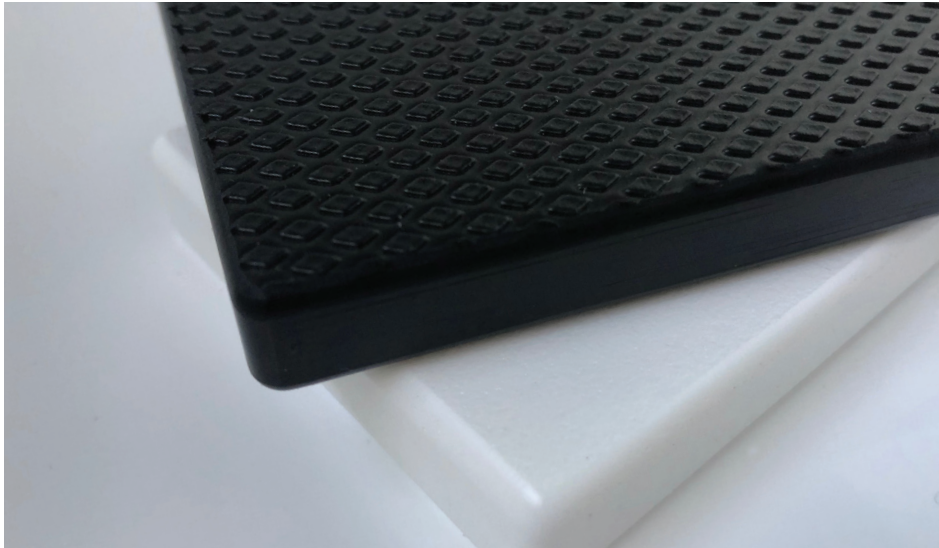


SIMONA® HDPE BOATBOARD® Anti-Slip

Rigid HDPE structure with diamond & dot surface texture that offers exceptional surface friction in slippery conditions.



SIMONA® HDPE BOATBOARD® Anti-Slip offers a combination of high friction surface, durability, appearance and fabrication ease and consistency.

In surface applications, this tough, UV resistant sheet withstands long term exposure to intense sun, salt water and rigorous use. This also makes it ideal for outdoor patio, poolside and marina surfaces. Its impact resistance, easy-to-clean surface and attractive appearance enhance indoor retail, poolside, clinical and scientific cabinetry as well.

SIMONA® HDPE BOATBOARD® Anti-Slip won't delaminate, rot or splinter, and its integral colors hide scratches and marring that ruin painted surfaces. Its stain resistance, easy-to-clean matte finish and consistent flatness assure long lasting appearance and functionality.

Advantages

- High friction surface
- Integral color hides marring, scratches
- UV and extreme weather resistance
- Solid polymer composition won't delaminate, rot or splinter
- Maintenance-free, easy to clean
- Excellent impact resistance
- Easy to fabricate using standard woodworking tools

Applications

- Boat platforms
- Playground surface materials
- Ladder steps
- Pool grating
- Swim platforms
- Decking
- Entryway safety pads

Configurations

- Sheet sizes
 - 48 x 96 in. (1,219 x 2,440 mm)
- Gauges
 - 1/2 in. (12.7 mm)
- Colors
 - Black
 - White
- Texture
 - Diamond
 - Dot
- No masking needed
- Custom colors, sizes: On request



SIMONA® HDPE BOATBOARD® Anti-Slip offers exceptional friction in slippery conditions like marine materials

PROPERTIES SIMONA® HDPE BOATBOARD® Anti-Slip

PROPERTY, Units of Measure ¹	Test Method	TYPICAL VALUES	
		SIMONA® HDPE BOATBOARD® Diamond Pattern	
Specific Gravity	ASTM D792	0.96 g/cc	
Water Absorption, %	ASTM D570	< 0.01	
MECHANICAL			
Tensile Strength @ Yield	ASTM D638	3,900 psi	26.89 MPa
Elongation @ Break, %	ASTM D638	>600	
Elongation @ yield, %	ASTM D638	5.9	
Flexural Modulus	ASTM D790	146,000 psi	1006.63 MPa
Flex strength @ 5% strain	ASTM D790	3.63 psi	.02 MPa
Notched Izod Impact	ASTM D256	2.78 ft-lb/in.	146.8 J/m
Hardness, Shore D	ASTM D2240	61	
Coefficient of Expansion x10 ⁻⁵	ASTM D696	10	
Slip Resistance (dry) SCOF	ASTM D2047	1.2	
Slip Resistance (wet) DCOF	ANSI A137.1	0.27	
Slip Resistance (dry) DCOF	ANSI A137.1	0.88	
THERMAL			
Continuous Service Temperature	Maximum	170° F	76.7° C
Melting Point	ASTM D3418	267° F	130.7° C
Heat Deflection Temp. @ 66 psi (0.45 MPa)	ASTM D648	167° F	75° C
Heat Deflection Temp. @ 264 psi (1.8 MPa)	ASTM D648	110° F	43.4° C
Flammability	UL 94	HB	
FDA			
FDA reg. 21 Chapter 1 part 177.2510	—	Yes	

¹All tests at 73°F (22.8°C) in dry conditions unless otherwise noted.

SIMONA® PE, PP AND PVC FOR MACHINING AND FABRICATION

SIMONA® Polypropylene, polyethylene sheet and rod

- SIMONA® Polypropylene homopolymer
- SIMONA® Polypropylene copolymer
 - Natural, white, black, eurogrey
- SIMONA® HDPE and HDPE BOATBOARD®
 - Natural white, black, custom colors
- SIMONA® HDPE BOATBOARD® Lightweight
- SIMONA® HDPE Polytone®
 - Outer “skin” color, contrasting color core

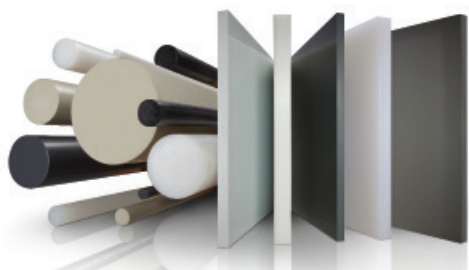
SIMONA® PVC sheet and rod

- SIMONA® PVC Type I & Type II
 - White, black, gray, colors
 - Clear

SIMONA® CPVC sheet

- White, gray

UL 94 V-0 and FM 4910 flammability test compliant
PP, PVC and CPVC grades available.



SIMONA AMERICA Industries offers the widest product range of PVC sheet and rod – FM 4910 rated sheet – chemical resistant materials from PVC, PP and PE to fluoropolymers – orthotics and prosthetics sheet – SIMONA Boltaron® aircraft sheet – plus proven products for boat building, outdoor furniture and many other industries.

SIMONA AMERICA Industries

101 Power Blvd.
Archbald, PA 18403
Phone 1 866 501 2992
Fax 1 800 522 4857
sales@simona-america.com
www.simona-america.com

DISCLAIMER AND LIMITATION OF WARRANTY:

All information contained herein is believed by SIMONA AMERICA Inc. to be reliable. Typical properties are based on laboratory tests conducted on material samples in accordance with standard test methodology. SIMONA AMERICA Industries makes no express or implied warranty that its products will perform in accordance with the data in all conditions and circumstances. To determine suitability for use, users must test applications under actual operating conditions. As a result, ALL EXPRESS OR IMPLIED WARRANTIES IN CONNECTION WITH SIMONA AMERICA Industries and BOLTARON PRODUCTS INCLUDING WARRANTIES OF MERCHANTABILITY AND FITNESS FOR A PARTICULAR PURPOSE ARE EXPRESSLY DISCLAIMED.