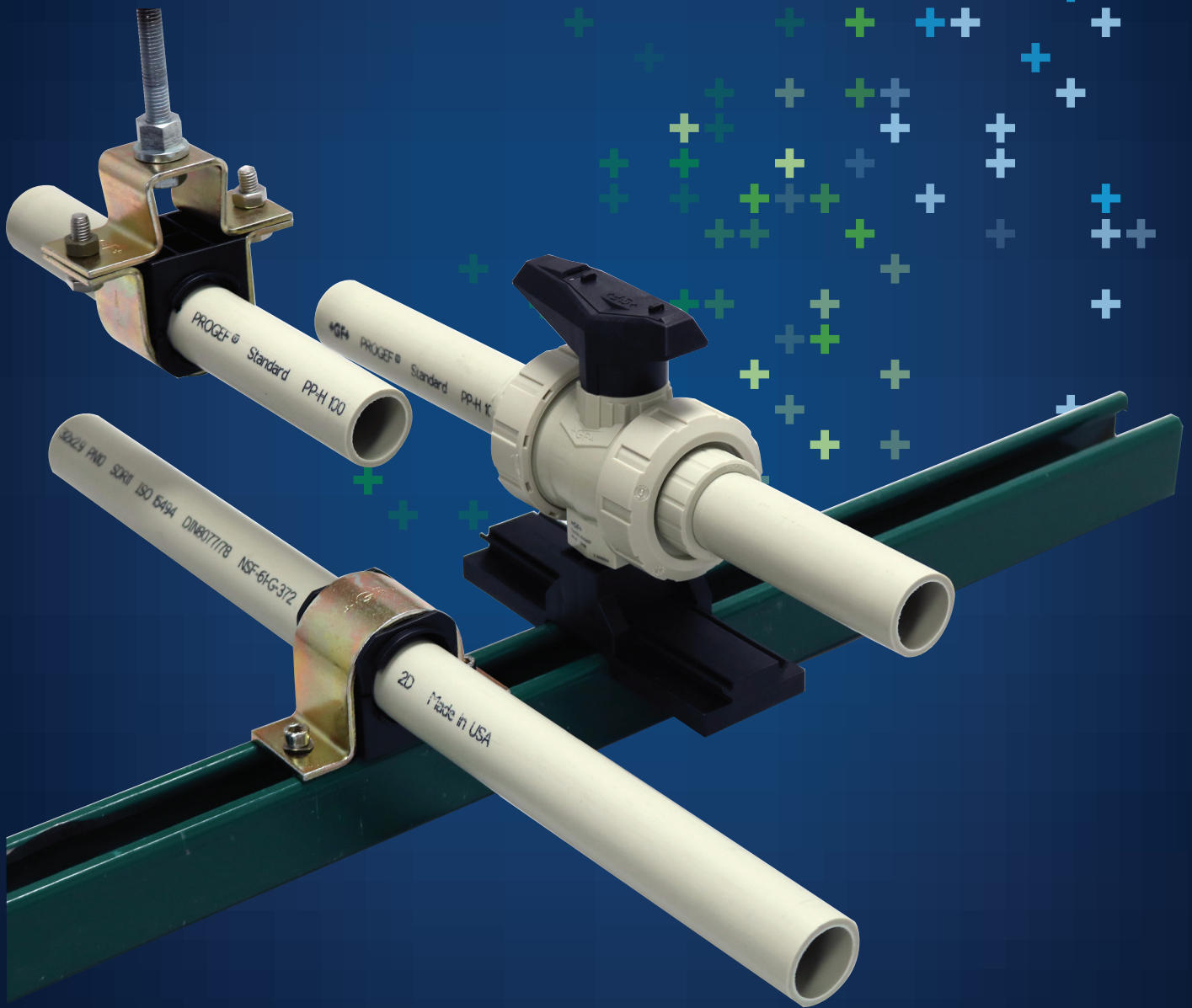


**+GF+**

GF Piping Systems

# Stress Less<sup>®</sup> Pipe Support System



**PRODUCT CATALOG**

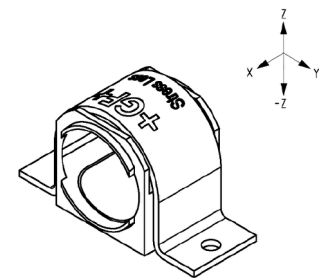
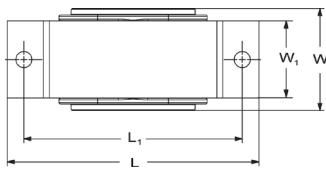
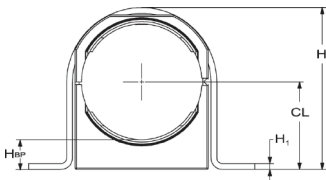
## Stress Less Pipe Guide - Metric

First pipe support system especially designed to eliminate stress transfer to pipe due to thermal expansion or seismic events. Has engineered, designed gap of 3mm between guide insert and pipe OD. Excessive force can never be exerted on the pipe regardless of bolt torque.

- Includes steel hoop and plastic guide insert.
- Hoop is trivalent gold chromium-coated galvanized steel, compliant with ASTM B633 Type VI.
- Guide insert is Polypropylene, Black, UV resistant.
- Mounts to any flat surface or standard strut support.
- Mounting holes in hoop for bolts size "SC" (not included).
- Recommend using 70,000psi (482 MPa) tensile strength or greater bolts in recommended sizes.
- $F_y$ ,  $F_z$ , and  $-F_z$  are rated design loads, in lb-f (pounds-force) and N (Newtons), for respective y, z, and -z directions.

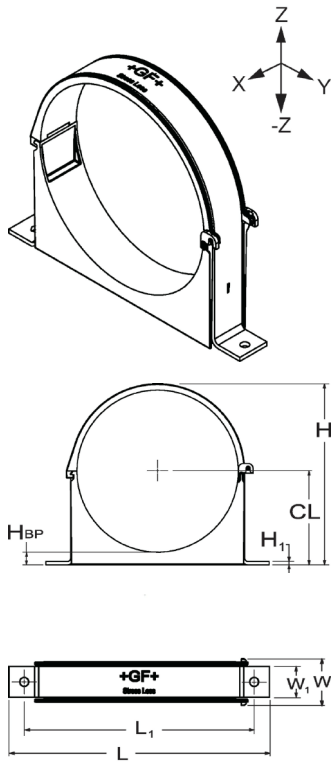
### Option:

- Stainless steel hoop bracket available S155484xxx.



Size (mm)	GF Code
20	155 484 500
25	155 484 501
32	155 484 502
40	155 484 503
50	155 484 504
63	155 484 505
75	155 484 506
90	155 484 507
110	155 484 508
125	155 484 518
140	155 484 519
160	155 484 509

Size (mm)	H (mm)	CL (mm)	Hbp (mm)	H1 (mm)	L (mm)	L1 (mm)	W (mm)	W1 (mm)	SC	$F_z$	$F_{-z}$	$F_y$
20	41	19	9	3	83	66	50	37	1/4" M6	150lbs / 660N	180lbs / 800N	150lbs / 660N
25	47	23	10	3	88	71	50	37	1/4" M6	150lbs / 660N	180lbs / 800N	150lbs / 660N
32	56	28	12	3	95	78	50	37	1/4" M6	150lbs / 660N	180lbs / 800N	150lbs / 660N
40	58	26	6	3	102	86	50	37	1/4" M6	150lbs / 660N	180lbs / 800N	150lbs / 660N
50	69	33	9	3	111	94	50	37	1/4" M6	150lbs / 660N	180lbs / 800N	150lbs / 660N
63	89	47	16	3	124	107	50	37	5/16" M8	200lbs / 800N	240lbs / 880N	200lbs / 800N
75	108	58	21	3	135	119	50	37	5/16" M8	300lbs / 1300N	360lbs / 1600N	300lbs / 1300N
90	113	58	13	3	151	134	50	37	5/16" M8	450lbs / 2000N	540lbs / 2400N	450lbs / 2000N
110	136	68	13	3	175	159	50	37	5/16" M8	650lbs / 2800N	780lbs / 3400N	600lbs / 2670N
125	152	80	15	3	187	171	50	37	5/16" M8	700lbs / 3100N	840lbs / 3700N	600lbs / 2670N
140	169	90	18	3	202	186	50	37	5/16" M8	700lbs / 3100N	840lbs / 3700N	600lbs / 2670N
160	193	98	18	5	251	227	50	36	3/8" M8	900lbs / 4000N	1080lbs / 4800N	600lbs / 2670N



### Large Stress Less Pipe Guide - Metric

First pipe support system especially designed to eliminate stress transfer to pipe due to thermal expansion or seismic events. Has engineered, designed gap of 3mm between guide insert and pipe OD. Excessive force can never be exerted on the pipe regardless of bolt torque.

- Includes steel hoop and plastic guide insert.
- Hoop is trivalent gold chromium-coated galvanized steel, compliant with ASTM B633 Type VI.
- Guide insert is Polypropylene, Black, UV resistant.
- Mounts to any flat surface or standard strut support.
- Mounting holes in hoop for bolts size "SC" (not included).
- Recommend using 70,000psi (482 MPa) tensile strength or greater bolts in recommended sizes.
- $F_y$ ,  $F_z$ , and  $-F_z$  are rated design loads, in lb-f (pounds-force) and N (Newtons), for respective y, z, and -z directions.

#### Option:

- Stainless steel hoop bracket available S155484xxx.

Size (mm)	GF Code
225	155 484 511
250	155 484 512
280	155 484 513
315	155 484 514

Size (mm)	H (mm)	CL (mm)	Hbp (mm)	H1 (mm)	L (mm)	L1 (mm)	W (mm)	W1 (mm)	SC	Fz
225	258	133	18	5	324	286	60	38	3/8" - M8	1750lbs / 7700N
250	285	146	18	6	367	329	60	38	1/2" - M12	1750lbs / 7700N
280	317	161	18	8	399	361	60	38	1/2" - M12	1750lbs / 7700N
315	350	178	18	6	441	403	72	51	1/2" - M12	1750lbs / 7700N

Size (mm)	F-z	Fy
225	2100lbs / 9300N	800lbs / 3560N
250	2100lbs / 9300N	800lbs / 3560N
280	2100lbs / 9300N	800lbs / 3560N
315	2100lbs / 9300N	800lbs / 3560N

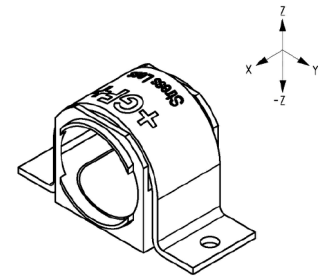
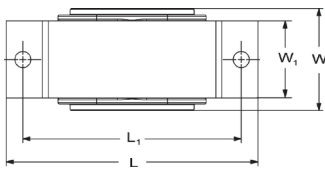
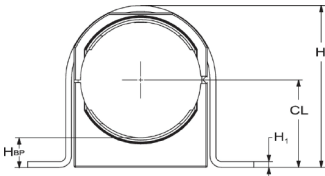
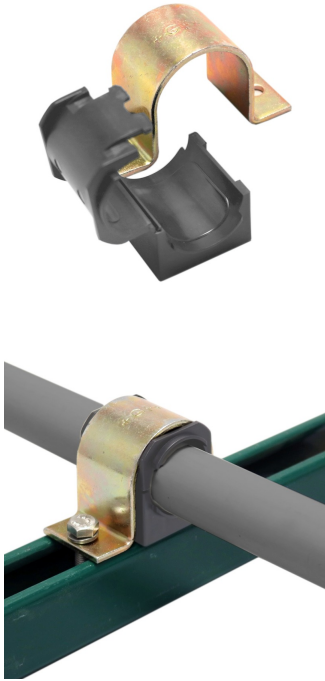
## Stress Less Pipe Guide - IPS

First pipe support system especially designed to eliminate stress transfer to pipe due to thermal expansion or seismic events. Has engineered, designed gap of 3mm between guide insert and pipe OD. Excessive force can never be exerted on the pipe regardless of bolt torque.

- Includes steel hoop and plastic guide insert.
- Guide insert is Polypropylene, Grey, UV resistant.
- Note: 5 inch guide insert is Polypropylene, Black, UV resistant.
- Hoop is trivalent gold chromium-coated galvanized steel, compliant with ASTM B633 Type VI.
- Mounts to any flat surface or standard strut support.
- Mounting holes in hoop for bolts size "SC" (not included).
- Recommend using 70,000psi (482 MPa) tensile strength or greater bolts in recommended sizes.
- $F_y$ ,  $F_z$ , and  $-F_z$  are rated design loads, in lb-f (pounds-force) and N (Newtons), for respective y, z, and -z directions.

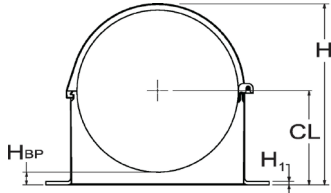
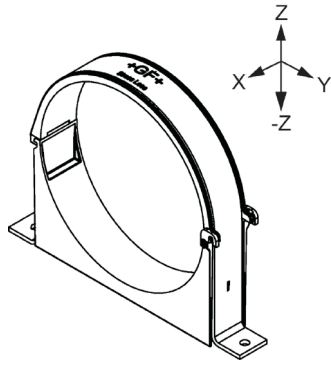
### Option:

- Stainless steel hoop bracket available S155484xxx.



Size (inch)	Code
½	155 484 520
¾	155 484 521
1	155 484 522
1 ¼	155 484 523
1 ½	155 484 524
2	155 484 525
2 ½	155 484 526
3	155 484 527
4	155 484 528
6	155 484 529

Size (inch)	H (inch)	CL (inch)	Hbp (inch)	H1 (inch)	L (inch)	L1 (inch)	W (inch)	W1 (inch)	SC	Fz	F-z	Fy
½	1.61	0.75	0.33	0.12	3.27	2.60	1.97	1.44	1/4"	150lbs / 660N	180lbs / 800N	150lbs / 660N
¾	1.85	0.90	0.37	0.12	3.46	2.80	1.97	1.44	1/4"	150lbs / 660N	180lbs / 800N	150lbs / 660N
1	2.20	1.10	0.44	0.12	3.74	3.07	1.97	1.44	1/4"	150lbs / 660N	180lbs / 800N	150lbs / 660N
1 ¼	2.28	1.05	0.22	0.12	4.02	3.39	1.97	1.44	1/4"	150lbs / 660N	180lbs / 800N	150lbs / 660N
1 ½	2.72	1.30	0.35	0.12	4.37	3.70	1.97	1.44	1/4"	150lbs / 660N	180lbs / 800N	150lbs / 660N
2	3.50	1.82	0.63	0.12	4.88	4.21	1.97	1.44	5/16"	200lbs / 800N	240lbs / 880N	200lbs / 800N
2 ½	4.25	2.29	0.85	0.12	5.31	4.69	1.97	1.44	5/16"	300lbs / 1300N	360lbs / 1600N	300lbs / 1300N
3	4.45	2.30	0.55	0.12	5.94	5.28	1.97	1.44	5/16"	450lbs / 2000N	540lbs / 2400N	450lbs / 2000N
4	5.35	2.70	0.44	0.12	6.89	6.26	1.97	1.44	5/16"	650lbs / 2800N	780lbs / 3400N	600lbs / 2670N
6	7.60	3.87	0.56	0.19	9.88	8.94	1.97	1.42	3/8"	900lbs / 4000N	1080lbs / 4800N	600lbs / 2670N



## Large Stress Less Pipe Guide - IPS

First pipe support system especially designed to eliminate stress transfer to pipe due to thermal expansion or seismic events. Has engineered, designed gap of 3mm between guide insert and pipe OD. Excessive force can never be exerted on the pipe regardless of bolt torque.

- Includes steel hoop and plastic guide insert.
- Hoop is trivalent gold chromium-coated galvanized steel, compliant with ASTM B633 Type VI.
- Guide insert is Polypropylene, Grey, UV resistant.
- Mounts to any flat surface or standard strut support.
- Mounting holes in hoop for bolts size "SC" (not included).
- Recommend using 70,000psi (482 MPa) tensile strength or greater bolts in recommended sizes.
- $F_y$ ,  $F_z$ , and  $-F_z$  are rated design loads, in lb-f (pounds-force) and N (Newtons), for respective y, z, and -z directions.

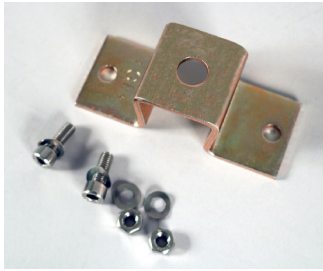
### Option:

- Stainless steel hoop bracket available S155484xxx.

Size (inch)	Code
8	155 484 531
10	155 484 532
12	155 484 533

Size (inch)	H (inch)	CL (inch)	Hbp (inch)	H1 (inch)	L (inch)	L1 (inch)	W (inch)	W1 (inch)	SC	$F_z$	$F-z$
8	9.72	4.97	0.56	0.19	12.75	11.25	2.34	1.50	3/8"	1750lbs / 7700N	2100lbs / 9300N
10	12.02	6.07	0.56	0.25	15.37	13.87	2.34	1.50	1/2"	1750lbs / 7700N	2100lbs / 9300N
12	14.02	7.07	0.56	0.25	17.37	15.87	2.84	2.00	1/2"	1750lbs / 7700N	2100lbs / 9300N

Size (inch)	$F_y$
8	800lbs / 3560N
10	800lbs / 3560N
12	800lbs / 3560N



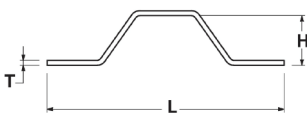
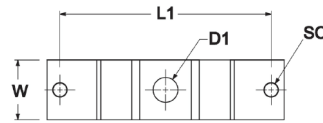
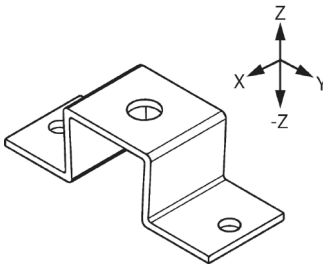
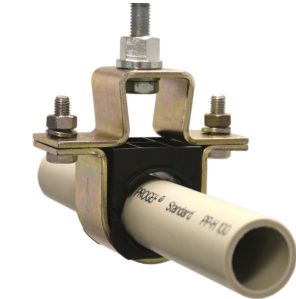
### Stress Less Pipe Guide - Clevis Hanger Kit

First pipe support system especially designed to eliminate stress transfer to pipe due to thermal expansion or seismic events. Has engineered, designed gap of 3mm between guide insert and pipe OD. Excessive force can never be exerted on the pipe regardless of bolt torque.

- Clevis Hanger Kit includes 1 hanging bracket, 2 socket cap screws, 4 washers, 2 hex nuts.
- For use with metric or IPS Stress Less Pipe Supports.
- Does not include pipe guide insert or bracket.
- Bracket is trivalent gold chromium-coated galvanized steel, compliant with ASTM B633 Type VI.
- Hardware is stainless steel.
- SC = bolt size.
- Seismic kicker configuration (V-bracing) Fy,z rating plus F-z rating.

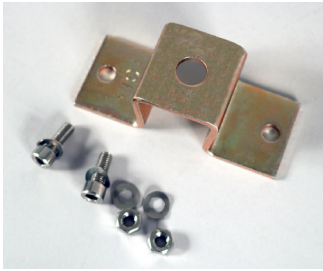
#### Option:

- Stainless steel hoop bracket available S155484xxx.



Size (mm)	Size (inch)	Code
20	½	<b>155 484 540</b>
25	¾	<b>155 484 541</b>
32	1	<b>155 484 542</b>
40	1 ¼	<b>155 484 543</b>
50	1 ½	<b>155 484 544</b>
63	2	<b>155 484 545</b>
75	2 ½	<b>155 484 546</b>
90	3	<b>155 484 547</b>
110	4	<b>155 484 548</b>
125	5	<b>155 484 558</b>
140		<b>155 484 559</b>
160	6	<b>155 484 549</b>

Size (mm)	Size (inch)	L (mm)	L1 (mm)	H (mm)	T (mm)	w (mm)	D1 (mm)	SC	Fy	F-z
20	½	83	66	32	3	38	12.7	1/4" / M6	150lbs / 660N	150lbs / 660N
25	¾	88	71	32	3	38	12.7	1/4" / M6	150lbs / 660N	150lbs / 660N
32	1	95	78	32	3	38	12.7	1/4" / M6	150lbs / 660N	150lbs / 660N
40	1 ¼	103	86	32	3	38	12.7	1/4" / M6	150lbs / 660N	150lbs / 660N
50	1 ½	111	94	32	3	38	12.7	1/4" / M6	150lbs / 660N	150lbs / 660N
63	2	124	107	32	3	38	12.7	5/16" / M8	200lbs / 800N	200lbs / 800N
75	2 ½	136	119	32	3	38	15.9	5/16" / M8	300lbs / 1300N	300lbs / 1300N
90	3	151	134	32	3	38	15.9	5/16" / M8	450lbs / 2000N	450lbs / 2000N
110	4	176	159	32	3	38	19.0	5/16" / M8	600lbs / 2670N	650lbs / 2800N
125	5	187	171	32	3	38	19.0	5/16" / M8	600lbs / 2670N	700lbs / 3100N
140		202	186	32	3	38	19.0	5/16" / M8	600lbs / 2670N	700lbs / 3100N
160	6	251	227	32	5	38	22.2	3/8" / M10	600lbs / 2670N	900lbs / 4000N



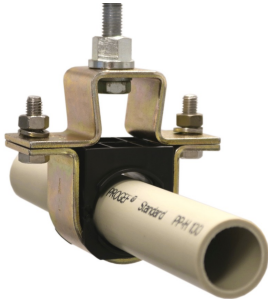
## Large Stress Less Pipe Guide - Clevis Hanger Kit

First pipe support system especially designed to eliminate stress transfer to pipe due to thermal expansion or seismic events. Has engineered, designed gap of 3mm between guide insert and pipe OD. Excessive force can never be exerted on the pipe regardless of bolt torque.

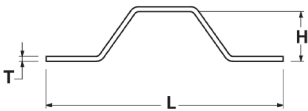
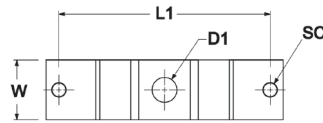
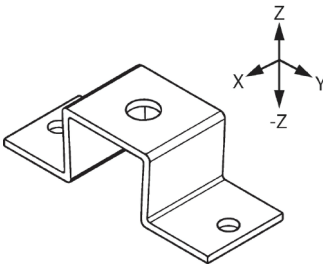
- Clevis Hanger Kit includes 1 hanging bracket, 2 socket cap screws, 4 washers, 2 hex nuts.
- For use with metric or IPS Stress Less Pipe Supports.
- Does not include pipe guide insert or bracket.
- Bracket is trivalent gold chromium-coated galvanized steel, compliant with ASTM B633 Type VI.
- Hardware is stainless steel.
- SC = bolt size.
- Seismic kicker configuration (V-bracing) Fy,z rating plus F-z rating.

### Option:

- Stainless steel hoop bracket available S155484xxx.

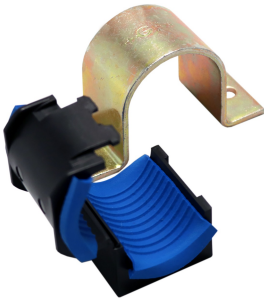


Size (mm)	Size (inch)	Code
225	8	<b>155 484 551</b>
250		<b>155 484 552</b>
	10	<b>155 484 553</b>
280		<b>155 484 554</b>
315	12	<b>155 484 555</b>



Size (mm)	Size (inch)	L (mm)	L1 (mm)	H (mm)	T (mm)	w (mm)	D1 (mm)	SC	Fy	F-z
225	8	324	286	76	5	38	20.6	3/8" / M8	800lbs / 3560N	1750lbs / 7700N
250		367	329	76	6	38	23.8	1/2" / M12	800lbs / 3560N	1750lbs / 7700N
	10	391	352	76	6	38	23.8	1/2" / M12	800lbs / 3560N	1750lbs / 7700N
280		399	361	76	8	38	23.8	1/2" / M12	800lbs / 3560N	1750lbs / 7700N
315	12	441	403	76	6	51	23.8	1/2" / M12	800lbs / 3560N	1750lbs / 7700N

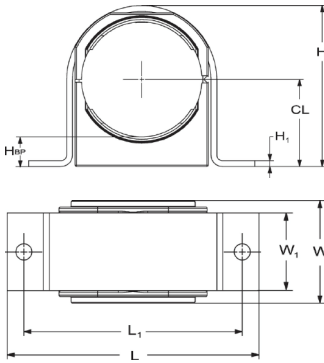
## Stress Less Pipe Support - Vertical Metric



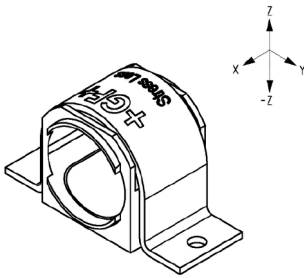
- For use as a vertical pipe support. Includes elastomeric insert strips in support to provide friction and snug fit against pipe.
- Bracket provides strength for support during seismic or excessive loading events.
- For metric size pipe 20mm – 63mm.
- Includes steel hoop and plastic guide insert.
- Hoop is trivalent gold chromium-coated galvanized steel, compliant with ASTM B633 Type VI.
- Guide insert is Polypropylene, Black, UV resistant.
- Mounts to any flat surface or standard strut support.
- Mounting holes in hoop for bolts size "SC" (not included).
- F<sub>x</sub>, F<sub>y</sub> and F<sub>z</sub> are rated design loads, in lb-f (pounds-force) and N (Newtons), for respective x, y and z directions.

### Option:

- Stainless steel hoop bracket available S155484xxx.



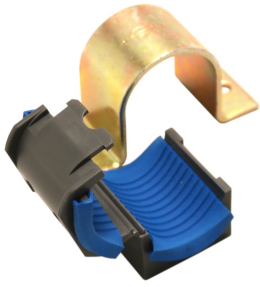
Size (mm)	Code
20	<b>155 484 560</b>
25	<b>155 484 561</b>
32	<b>155 484 562</b>
40	<b>155 484 563</b>
50	<b>155 484 564</b>
63	<b>155 484 565</b>



Size (mm)	H (mm)	CL (mm)	Hbp (mm)	H1 (mm)	L (mm)	L1 (mm)	W (mm)	W1 (mm)	SC	F <sub>yz</sub>	F-z
20	41	21	11	3	83	66	50	37	1/4" / M6	150lbs / 660N	180lbs / 800N
25	47	25	12	3	88	71	50	37	1/4" / M6	150lbs / 660N	180lbs / 800N
32	56	30	14	3	95	78	50	37	1/4" / M6	150lbs / 660N	180lbs / 800N
40	58	28	8	3	102	86	50	37	1/4" / M6	150lbs / 660N	180lbs / 800N
50	69	35	10	3	111	94	50	37	1/4" / M6	150lbs / 660N	180lbs / 800N
63	89	49	17	3	124	107	50	37	5/16" / M8	200lbs / 800N	240lbs / 880N



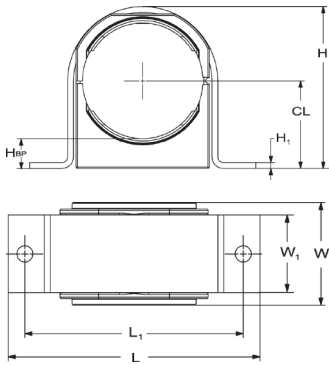
## Stress Less Pipe Support - Vertical IPS



- For use as a vertical pipe support. Includes elastomeric insert strips in support to provide friction and snug fit against pipe.
- Bracket provides strength for support during seismic or excessive loading events.
- For IPS size pipe 1/2" - 2".
- Includes steel hoop and plastic guide insert.
- Hoop is trivalent gold chromium-coated galvanized steel, compliant with ASTM B633 Type VI.
- Guide insert is Polypropylene, Grey, UV resistant.
- Mounts to any flat surface or standard strut support.
- Mounting holes in hoop for bolts size "SC" (not included).
- Fx, Fy and Fz are rated design loads, in lb-f (pounds-force) and N (Newtons), for respective x, y and z directions.

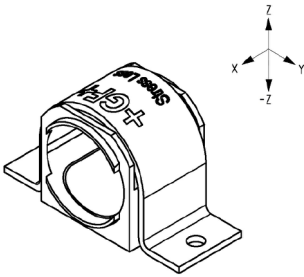
### Option:

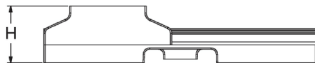
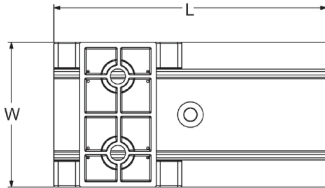
- Stainless steel hoop bracket available S155484xxx.



Size (inch)	GF Code
1/2	155 484 580
3/4	155 484 581
1	155 484 582
1 1/4	155 484 583
1 1/2	155 484 584
2	155 484 585

Size (inch)	H (inch)	CL (inch)	Hbp (inch)	H1 (inch)	L (inch)	L1 (inch)	W (inch)	W1 (inch)	SC	Fyz	F-z
1/2	1.61	0.83	0.41	0.12	3.27	2.60	1.97	1.44	1/4"	150lbs / 660N	180lbs / 800N
3/4	1.85	0.98	0.45	0.12	3.46	2.80	1.97	1.44	1/4"	150lbs / 660N	180lbs / 800N
1	2.20	1.18	0.52	0.12	3.74	3.07	1.97	1.44	1/4"	150lbs / 660N	180lbs / 800N
1 1/4	2.28	1.13	0.30	0.12	4.02	3.39	1.97	1.44	1/4"	150lbs / 660N	180lbs / 800N
1 1/2	2.72	1.38	0.43	0.12	4.37	3.70	1.97	1.44	1/4"	150lbs / 660N	180lbs / 800N
2	3.50	1.90	0.71	0.12	4.88	4.21	1.97	1.44	5/16"	200lbs / 800N	240lbs / 880N





### Stress Less Valve Support

- Designed to properly support GF valves when the connected piping moves, due to thermal expansion and contraction. Smooth linear movement ( $\pm 3$ in) with very low friction. Helps ensure the full design life of piping systems by eliminating stress points.
- For GF metric and IPS valves with integrated support bases. Types 546, 523, 543 horizontal and 5-series diaphragm valves. Manual and actuated.
- Sizes 3/8" – 2" (16mm – 63mm).
- Can be mounted on any flat surface or strut support (shown in image, valve not included).
- Valve support includes base made of glass-filled PP, and upper slider made of PP. Both are black and UV resistant.
- Supplied with 2 stainless steel hex socket screws for mounting valve to upper slider component.

Size (mm)	Size (inch)	Code	H (mm)	w (mm)	L (mm)
16mm - 32 mm	3/8" - 1"	<b>155 484 120</b>	43	52	160
40mm - 63mm	1 1/4" - 2"	<b>155 484 121</b>	33	85	160

## Local support around the world

Visit our webpage to get in touch with your local specialist:  
[www.gfps.com/our-locations](http://www.gfps.com/our-locations)



The information and technical data (altogether "Data") herein are not binding, unless explicitly confirmed in writing.  
The Data neither constitutes any expressed, implied or warranted characteristics, nor guaranteed properties or a guaranteed durability. All Data is subject to modification. The General Terms and Conditions of Sale of Georg Fischer Piping Systems apply.